



# Tea Gardens Public School

Witt Street, Tea Gardens, 2324

14/9/2015 Week 10 Term 3

## PRINCIPAL'S REPORT

### STUDENT OF THE WEEK

Congratulations are extended to Hayleigh Simmons from the Mates class for being named our 'Student of the Week'. Hayleigh receives the acknowledgement for being a delight to teach. Congratulations Hayleigh on being named this week's student of the week.

Come to our assembly this Friday to find out who will be our next Student of the Week! Assembly commences at 9.10am and everyone is welcome. This Friday, Miss

Maloney's Mates class will be hosting our assembly and prizes will be drawn in the Spelling Bee draw. Please come along and join us!



## BOUQUETS

### School and Community Band

On Saturday, the School and Community Band played an assortment of tunes at the annual Wildside Festival. Many thanks are extended to Mrs Booth for coordinating the band.

### Jane McGrath Foundation.

Many thanks are extended to the students and staff who supported our Jane McGrath Foundation fundraiser last Thursday. We were able to raise \$168 which will be forwarded to the Jane McGrath Foundation.

## Spelling Competition

### Tea Gardens Public School Final

Tea Gardens Public School has some super spellers. This was proven last Friday's assembly when finalists from each stage competed against each other. The finalists were Early Stage One - Rory Ingram, Amarlieah Mobbs and Zoie Hunter. Stage One - Jaydon Condie, Tyler Rodgers and Darcy Ingram. Stage Two - Sophie Frazer, Cameron Jeffries and Kim Deng. Stage Three - Taylor Simmons, Mikelle McAlinney-Nelson, Casey O'Bryan and Lily-Arum Laws.

The audience held their breath as these competitors attempted and conquered some very difficult words. Our winners were:

Early Stage One - Rory Ingram

Stage One - Darcy Ingram

Stage Two - Sophie Frazer

Stage Three - Taylor Simmons

Thank you to all parents, families and community members who have supported the TGPS students with sponsoring a speller and assisting students to learn words.

Super fundraisers. The total money raised so far is \$3,385.

A fantastic result.

If your child has yet to return their sponsorship money and form please send it in as soon as possible.

Debbie Booth, Carol Andrews and Christine Maloney  
(Spelling Competition Committee)

## THE TELL THEM FROM ME- Partners in Learning – Parent Survey

### The *Partners in Learning* parent feedback survey

Our school will also be participating in the Partners in Learning parent survey, another part of the Tell Them From Me suite of surveys (student, teacher and parent surveys) on student engagement. The survey asks parents and carers questions about different factors that are known to impact on student wellbeing and engagement. Running this survey will help our school understand parents' and carers' perspectives on their child's experience at school. These include: communication between parents/carers and staff, activities and practices at home and parent/carer views on the school's support of learning and behaviour. This valuable feedback will help our school make practical improvements.

The survey is conducted entirely online at home or on public computers. The survey will typically takes 15 minutes or less to complete and is completely confidential. The parent survey will be conducted between 17 August and 16 October. Participating in the survey is entirely voluntary, however, your responses are very much appreciated.

More information about the survey is available at: <http://surveys.cese.nsw.gov.au/information-for-parents>

The survey is a great opportunity for our parents to provide us with valuable and quick feedback on what they think about our school.

To commence the survey, please click on the following link:

[https://nsw.tellthemfromme.com/j\\_acegi\\_security\\_check?i\\_username=parent18257&j\\_password=Tea3175](https://nsw.tellthemfromme.com/j_acegi_security_check?i_username=parent18257&j_password=Tea3175)

If you don't have access to a computer at home to complete the survey, we can arrange for you to use a computer at school.

Please contact the office on 4997 0286 to arrange.

## COMING UP

### START SMART – this Thursday

Students from Year 1 to Year 6 will be involved in START SMART workshops on Thursday 17 September. The Start Smart program is delivered through a series of workshops to over 270,000 students each year and equips students with the confidence and competence to make smart decisions about money by making money management interactive, engaging and fun!

The Start Smart Primary program is delivered as 3 separate workshops according to year group and teaches money skills in a way that students can understand and enjoy. 'Captain Cash' or 'Money Girl' and 'Coach Cash' take students on an adventure in new money skills. Our students will learn to identify and understand currency, the difference between 'wants' and 'needs', the importance of saving and budgeting and how to shop around for the best deal.

### Term 4 Dates- 6 October to 16 December

School returns for Term four on Tuesday 6 October for students and staff. Please have a safe and enjoyable vacation.

## KINDY16

## Kindergarten Enrolments 2016

Where are you? It's time to enrol for next year. Please contact the office to obtain an enrolment form if you have a child starting Kindergarten in 2016. You can do this either by calling in, phoning the school on 0249970286 or emailing the school at [teagardens-p.school@det.nsw.edu.au](mailto:teagardens-p.school@det.nsw.edu.au)

## Kindergarten Orientation commencing on 29 October

Our Kindergarten Orientation program starts on **Thursday 29**

**October**. The children spend time in the classrooms with teachers. At the same time, our prospective 2016 Kindy parents are offered an information session on a range of topics including:

- Is my child ready for school?
- The First Day
- The A-Z guide to Tea Gardens
- What is Best Start?
- What do students learn in Kindergarten? - **A day in the life of Kindergarten**
- How can parents participate?
- Our Uniform
- What if my child has special needs?
- The role of the School Counsellor
- Question and Answer session

Parents will take a tour around our facilities and meet the Principal and staff who can answer all of your questions.

**It is possible some previous communication about the starting date for the program has had conflicting information. The date Kindergarten Orientation/Parent Information day commences is on Thursday 29 October. Please add this date to your calendars.**

**Mark Clemson**  
Principal

## Tea Gardens Public Library Promotion

Tea Gardens Public Library is running a competition for our students this term to encourage borrowing and use of the public library here in Tea Gardens. They are offering a free book to each student in the winning class who has the most members sign up for a library card. Those of you who already have a library card, let the librarians know the next time you use the library and ask them to add your name to the list. Application forms and information was left for each of the classes during Book Week. So, get in there and join the Great Lakes library.

## Under the Sea Book Fair is coming to the library

In Week 3 next term (Monday 26 – Tuesday 27 October) we will be holding our **annual Book Fair**. Just like last year it will be a Scholastic Book Fair and hopefully it will once again be very successful.

The fair will be open before school on Monday and Tuesday. We hope to see everyone at our fair. Prices of books and stationery range from \$1 to \$25. EFTPOS facilities will be available.

Rachel Cooper  
Teacher Librarian



## P&C Meeting

The postponed P&C meeting from last week will be held tomorrow evening in the school library commencing at 7pm

## “Around the World” P&C Trivia Night

Saturday 17 October. Book your table of 8 for just \$80. Dress up and win a prize! This is an over 18's event.

## Myall River Festival and Duck Derby

We will again be running the traditional Duck Derby with some fantastic prizes to be won! We will need parent helpers in shifts throughout the day, just giving up an hour or two of your time will be invaluable to the success of our event.

## REMINDERS

### School Contributions

Thank you to parents who have paid their School Contribution of \$50 per family. This amount is set by the P & C and helps pay for the much needed resources for all our students at Tea Gardens Public School.

Outstanding invoices have been sent home. We would appreciate payment as soon as possible. Eftpos is available at office.

### Request for support at school for student's with Health Conditions— Urgent

We are currently updating our records of all students with health conditions who may require medication or support at our school.

Forms have been sent home to all parents with children who have known medical conditions. These forms are to be completed by parents and returned to the office as soon as possible.

If your child has an **allergic reaction**, then an action plan will be included and needs to be completed and signed by your medical practitioner.

If your child has **asthma**, then an action plan managing your child's asthma will be included and also needs to be completed and signed by your medical practitioner.

All parents with children who have medical conditions will also receive a **consent for doctor** to provide information about their child's health condition. These also need to be completed and signed by the child's parent.

### A reminder to notify the school about your child's health

We welcome information from parents about your child's health, even if you are not requesting specific support from our school. Our school asks for medical information when you enrol your child. It is also important that you let us know if your child's health care needs change or is a new health condition develops. (forms are available from school office)

Information about allergies, medical conditions such as asthma and diabetes and other health care related issues (including prior conditions such as medical procedures in the last 12 months) should be provided in writing to the principal.

Please also remember to notify staff in the school office of any changes to your contact details or the contact details of other people nominated as emergency contacts.



## Staff car park

The staff car park is for staff only. Please do **not** use the car park to drop off and pick up your children. Please teach your children to enter and exit the school grounds using the pedestrian access gates located on Ogden Street or Witt Street.



## Disabled parking and bus zones

Only cars displaying a valid disabled parking tag may park in the disabled parking area. Cars are not permitted to park or drop off children in bus zones between 8.30am-9.30am and 2.30pm-4.00pm.



**Penalties exceed \$258 and the loss of 2 demerit points.**

## SCHOOL HOLIDAY ROAD SAFETY REMINDER FOR FAMILIES

With the school holidays approaching, daily routines will soon change. Different play locations and holiday destinations means different traffic environments.

So to help keep our children safe, families are

reminded about these key road safety points:

- **Stop, look, listen, think every time you cross the road.**  
If your child is aged 8 years or younger hold their hand when walking near or across roads. If your child is 9-10 years old always actively supervise them.
- **It's the law that everyone wears a helmet when riding a bike in a public place.**  
It makes sense to wear a helmet when riding scooters and skateboards too!
- **Click clack front 'n back every person for every trip.**  
Everyone in the car must be securely buckled up in the right seatbelt or child restraint.
- **Talk to your child about being a safe road user.**  
Reinforce safe road behaviours by being a good role model! Children learn safe road behaviours from the adults who care for them. Talk about what you are doing to be safe when near roads, in the car and when riding.
- **Point out road safety differences and dangers in new environments.**  
This is especially important when on holidays in different surroundings. Roads, footpaths, parks, carparks, bike tracks and bike lanes may look different in holiday areas.

**The best way to keep your child safe is to actively supervise them.**

**Talk and teach your child about road safety every time you are out an about.**

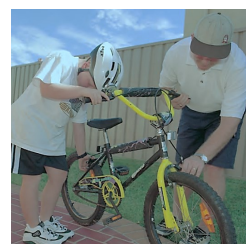
**Remind other adults who care for your children to do this too.**

You can find out more at:

Safety Town

Department of Education

Transport for NSW



**Have a safe holiday break!**

NSW Office of Environment & Heritage

# BIODIVERSITY DAY AT BLUE GUM HILLS REGIONAL PARK

**Fantastic free community day**  
Thursday 24th September, 10am - 3pm  
Blue Gum Hills Regional Park, Minmi

- Free BBQ lunch
- Crazy animal photobooth
- BioBlitz
- Free plant giveaway
- Bee hotels and nesting boxes
- Interact with live animals
- Discover waterbugs and frogs
- Try orienteering
- Prizes to be won
- Nature activities (tree planting, guided walks)
- Bush poetry with the Minmi Magster
- Sustainable hair and beauty, and more....

**Bring a blanket, water bottle and hat**

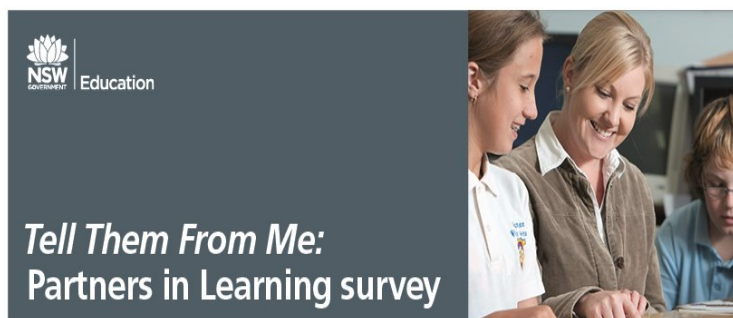


© Office of Environment and Heritage. Phone: (02) 9995 5000 (switchboard). Email: [info@environment.nsw.gov.au](mailto:info@environment.nsw.gov.au) Website: [www.environment.nsw.gov.au](http://www.environment.nsw.gov.au)

Biodiversity is the variety of all life forms, the genes they contain and the ecosystems of which they form a part



Tickets  
available  
from  
school



You're invited to participate in the *Tell Them From Me (TTFM)* Partners in Learning survey designed for parents and carers. This survey complements the TTFM student and teacher surveys, which focus on student engagement, wellbeing and effective teaching practices. All Department of Education schools have the opportunity to participate if they choose.

### Why should I participate?

Parents and carers are an important and valued part of the school community. Schools can use survey feedback to make practical improvements and inform school planning.

### What does it involve?

This online survey takes about 15 minutes to complete. It is anonymous and voluntary.

If you have more than one child at this school, and feel that your children's experiences differ, you can complete the survey more than once.

### How can I participate?

You can access the survey in your own time, between 17 August and 16 October 2015.

Follow the link below on your computer or tablet:

If you require access to a computer at school to complete the survey. Please contact Mark Clemson – School Principal who will make these arrangements for you.

More information on the Partners in Learning survey can be found on the NSW Department of Education's TTFM website: <http://surveys.cese.nsw.gov.au/>



## Merit Awards

Congratulations to the following students who received a merit award on Friday 11th September 2015. They were:

### ALLIES

Rachael Watson Working well in class  
Mitchell Henning Working well in class

### BRIGADE

Noah Effort and application when reading  
Lewis Smith An informative and technical report on penguins

### HEROES

Seth Rawlings Producing quality writing  
Evie Braddick Improvement in spelling during story writing

### MATES

Amelia Henning For her cooperative approach to other Students  
Murray Woodfield For his accurate recall of facts in mathematics

### POPPIES

Kaitlin Smith An excellent effort with her imaginative Writing  
Elle Newlin Great effort with her imaginative writing

### AIF

Ella Worley Enthusiastic participation in class  
Jade Johnson Quality writing and composing

### CADETS

Flynn Crozier 100% in his spelling test  
Zane Ridley Excellent participation in the rugby clinic

### SQUADRON

Taylor Simmons Outstanding spelling results  
Georgia Stevenson Excellent participation in the cricket and rugby league clinics

## Good for Kids good for life

### 5 TIPS FOR SCREEN TIME AT HOME

Are you having trouble getting your child off technology or watching television?

Try some of these ideas to reduce the amount of screen time your child has each day:

- Go screen free for weekdays
- Try technology free Tuesdays
- Try imagination Wednesdays
- Restrict times when your child has access such as "no screen time before dinner"
- Provide seven ½ hour vouchers on a Friday afternoon to last for the week. When your child watches the television or has other screen time e.g. computer, video games etc. they hand a voucher back. This limits the child to 3.5 hours of screen time during the week.



Image courtesy of Imaginymagical at FreeDigitalPhotos.net

Source: Murrumbidgee Local Health District



PHONE 4924 6499



# KIDS CAN CREATE THEIR OWN CRICKET MOMENT

## PLAYCRICKET.COM.AU



**CRICKET A SPORT FOR ALL**

**play cricket**

Cricket is a sport for all and there's more ways than ever for kids to experience the fun of cricket!



## LEARN TO BE A LIFESAVER

### TEA GARDENS HAWKS NEST SURF LIFE SAVING CLUB



**First Day Nippers**  
Sunday 4 Oct 15  
9am

**Nippers**  
U6 to U14

**Surf Rescue Certificate**  
from 13 yrs

**Bronze Medallion**  
from 15 yrs

**Surf Club Open Day**  
18 Oct 15


#### FURTHER INFO CONTACT

Kate Maddison  
0400 204 450  
tghnslsc@gmail.com  
teagardenshawksnestslsc.com


## FAMILY PORTRAITS

IN SUPPORT OF TEA GARDENS / HAWKS NEST PRESCHOOL

**YOU GET ALL THIS FOR JUST \$ 15**



10 x 13 inch family portrait



Keyring

**PLUS THE CHANCE TO WIN \$1500**

NSW Permit No. LTSP/14/06832 Visit - [www.advancelife.com.au](http://www.advancelife.com.au) for the full terms and conditions

**advancedlife STUDIOS**

**SUNDAY 18<sup>TH</sup> OCTOBER AT PRESCHOOL (YAMBA STREET HAWKS NEST)**  
Ph: Preschool 49970037 or Shelley Linderman 0429455660 for Bookings



**present...**

**He Said and She Said... & The Misused Mill Girl**

**\$15 per seat**

**October Wed 14<sup>th</sup> - Sat 17<sup>th</sup>**  
5 performances...

Tickets on sale from 7<sup>th</sup> September at: Ice Cream Shack, Hawks Nest & Tea Gardens Pharmacies.

Evenings - doors open 6pm, show starts 7pm at Hawks Nest Community Hall.  
Saturday matinee doors open 12midday, shows starts 1pm at North Arm Cove Community Centre.

Proudly Supported By Great Lakes Council.

For more information please  Find us on Facebook at Myall Coast Entertainers



**BYO drinks and nibbles!**

Get ready to go

## \* AROUND THE WORLD \*

For the Tea Gardens Public School P&C Fundraising

## TRIVIA NIGHT

Saturday 17<sup>th</sup> October 2015 \* 6.30 for a 7pm start in the school hall  
Tables of 8 @ \$80 (call to join a table!)

*Dress up for great night of fun and prizes!*




Tea, coffee and slice provided BYO food and drinks.  
To book please call the school on 4997 0286  
or call Jude on 49972135

*\*This is an over 18s event.*






# TEA GARDENS PUBLIC SCHOOL CANTEEN MENU & VOLUNTEERS ROSTER

<b>WEDNESDAY</b> <b>16<sup>TH</sup> September</b> <b>Dan Driscoll Ngaire White (9-12)</b> <b>Amy Rodgers (9-2)</b>	<b>THURSDAY</b> <b>17<sup>TH</sup> September</b> <b>Deb Smart Jen Ewen (9-12)</b> <b>Lerane Jarman (9-2)</b>	<b>FRIDAY</b> <b>18<sup>TH</sup> September</b> <b>Dan Driscoll Trudy Brumby (9-12)</b> <b>Karen Katz (9-2)</b>
<p style="text-align: center;"><b><u>NEW</u></b></p> <p style="text-align: center;">Chicken noodle &amp; veg casserole</p>  <p style="text-align: center;">*Veg – broccoli, carrot &amp; beans*</p>	<p style="text-align: center;">Sloppy Joe's</p> 	<p style="text-align: center;"><b><u>Last day of canteen Term 3</u></b></p> <p style="text-align: center;">Chip &amp; gravy roll</p>  <p style="text-align: center;">**Optional bbq or tomato sauce**</p>
<b>CANTEEN SUPERVISOR</b>	<b>DANIELLE DRISCOLL</b>	<b>0421976137</b>
<b>Sandwiches available</b> <b>Wed, Thurs, Fri</b>	<b>Vegemite, Jam or Honey</b> <b>\$2.00</b>	<b>Cheese or cheese &amp; Tomato \$3.00</b>

## ***Slush Puppie Promotion***

Every time you buy a Slush Puppie for \$2 you have a chance of winning a free Slush Puppie!

You can redeem the free one on the next canteen day.



## HELP NEEDED TERM 4 2015

**PLEASE COMPLETE THIS FORM AND RETURN TO OFFICE IF YOU ARE ABLE TO HELP IN OUR CANTEEN.**



### **Canteen Volunteer**

Name: \_\_\_\_\_ Telephone: \_\_\_\_\_

Child's Name: \_\_\_\_\_ Class: \_\_\_\_\_

Please nominate: (day which you prefer to work and how often)

- |                                 |                                   |
|---------------------------------|-----------------------------------|
| <input type="radio"/> Wednesday | <input type="radio"/> Weekly      |
| <input type="radio"/> Thursday  | <input type="radio"/> Fortnightly |
| <input type="radio"/> Friday    | <input type="radio"/> Monthly     |
| <input type="radio"/> 9am-12pm  | <input type="radio"/> 9am-2pm     |



Many Thanks,  
 Danielle Driscoll  
 Canteen Supervisor  
**0421976137**



## WILD WORLD OF ROCKPOOLS

Don't miss this great introduction to the complex world and amazing creatures of rockpools on Boat Harbour's headland. You'll see animals that don't move, and others that look like plants. You'll learn what's safe to touch, and what you shouldn't disturb. Wear enclosed shoes and be prepared to possibly get them a little wet. There is a 1km return walk over rough headland, on an easy to medium grade, suitable for children 6 years and older.

**When:** Thursday 24 September, 9.30–11.30am

**Price:** Adults \$12, Children (6–16 years) \$12, Family (2A, 2C) \$40  
[www.nationalparks.nsw.gov.au/things-to-do/Guided-tours/wild-world-of-rockpools](http://www.nationalparks.nsw.gov.au/things-to-do/Guided-tours/wild-world-of-rockpools)

## WILDERQUEST TOOLS, TUCKER, TRACKS AND TALES

Join our Worimi Aboriginal Rangers to discover some of Port Stephens' Worimi culture. Hear stories shared from Elders and create animal track stories in sand. Explore our natural bush supermarket – its tucker, tools and medicines. Activities suitable for the whole family. Easy walk, about 1km.

**When:** Tuesday 29 September, 2pm – 4pm

**Price:** Adult \$12, Children (5–16 years) \$12, Family (2A, 2C) \$40. Children under 5 free.

[www.nationalparks.nsw.gov.au/things-to-do/Guided-tours/wilderquest-tools-tucker-tracks-and-tales](http://www.nationalparks.nsw.gov.au/things-to-do/Guided-tours/wilderquest-tools-tucker-tracks-and-tales) (available from 15/9/13)



K. BRADY/ON

## WILD ABOUT WHALES: WHALE TALES BUSH WALK

Enjoy a 2-hour bush walk, spectacular time-worn headlands and chasms, look for whales, and experience the bush springing to life after fire. This speciality tour is limited to 15 people – please see the separate flyer.

**When:** Wednesday 30 September, 9.30am–11.30am

[www.nationalparks.nsw.gov.au/things-to-do/Guided-tours/wild-about-whales-whale-tales-bush-walk](http://www.nationalparks.nsw.gov.au/things-to-do/Guided-tours/wild-about-whales-whale-tales-bush-walk)

## WILDERQUEST BUSH TO BEACH FAMILY DISCOVERY

Are you looking for school holiday fun, packed with fantastic activities exploring nature for the whole family? Discover hidden bush places, bush colours, create your own micro trail and be part of an exciting WilderQuest beach hunt. Easy walk about 1 km in the Zenith Beach area of Tomaree National Park. Suitable for all ages.



R. MCKINLEY/ON

# Spring into nature around Port Stephens

Port Stephens Tourism



## MAGICAL BUSH BY NIGHT

Night is a special time to explore Tomaree's bush and wetlands. There's loads to delight the senses and we may be lucky enough to spot an animal or two. Please bring a small torch (if you have one), snacks, water, warm clothes and wear fully enclosed shoes. Children 6 years and older only. Easy walk, about 2.5km return.

**When:** Tuesday 22 September, 6pm – 8pm

**Price:** Adult \$12, Child (6–16) \$12, Family (2A, 2C) \$40. Not suitable for children under 6 years.

[www.nationalparks.nsw.gov.au/things-to-do/Guided-tours/magical-bush-by-night](http://www.nationalparks.nsw.gov.au/things-to-do/Guided-tours/magical-bush-by-night) (available from 15/9/13)



8/9/13

## TOMAREE'S WILDERQUEST TREASURE TRAIL

Discover the sights and sounds of Tomaree National Park. Equipped with a Discovery Kit, our action will step back to the time of World War II to the sites of the torpedo, fort and guns. Taking off our defence hats in exchange for some time getting close to nature, we'll explore the Tomaree Head Summit walk with activities along the way. Enjoy the spectacular scenery then stay if you'd like to decorate your own WilderQuest bag. Suitable for children aged 6 years and over. Reasonable fitness required, medium grade with steps over a 2.5km return.

**When:** Tuesday 22 September, 9.30am–12pm

**Price:** Adults/Children \$15 per person. Family (2A 2C) \$50

[www.nationalparks.nsw.gov.au/things-to-do/Guided-tours/wilderquest-tomaree-treasure-trail](http://www.nationalparks.nsw.gov.au/things-to-do/Guided-tours/wilderquest-tomaree-treasure-trail)

Join our Discovery Rangers to experience a different side to Port Stephens and Tomaree National Park this spring school holidays. There's something for everyone.

## BOOKINGS & INFORMATION

**For all tours:** Please remember to wear closed shoes, and bring water, sunscreen, and weather protective clothing, such as a hat or raincoat. Children under 15 years must be accompanied by an adult.

**Bookings for all NPWS Discovery Tours are essential.**

Book online following the links below, or phone 13000 PARKS (13000 72757).

For more information on tours, such as meeting points, please follow the web links or ask on booking. For general enquiries, phone Sue Olsson on (02) 4984 8210, or email [suzanne.olsson@environment.nsw.gov.au](mailto:suzanne.olsson@environment.nsw.gov.au)